



State seal



State flag



*State bird, Cardinal (*Cardinalis cardinalis*)*



*State game mammal, White-tailed deer (*Odocoileus virginianus*)*



*State wildflower, Large white trillium (*Trillium grandiflorum*)*



*State insect, Ladybug (*Coccinellidae*)*

Key Facts and State Symbols

Governor	Richard Michael DeWine (R)
Lieutenant governor	Jon A. Husted (R)
U.S. senators	Sherrod Campbell Brown (D) James David Vance (R)
State capital	Columbus
Date of statehood	March 1, 1803 (17th state)
State nicknames	The Buckeye State; Birthplace of Aviation; The Heart of It All
State motto	“With God, all things are possible”
Demonym	Ohioan
Largest City	Columbus
Highest Point	Campbell Hill (1,549 feet)
Lowest Point	Ohio River at Indiana border (455 feet)
Time Zone	Eastern
State amphibian	Spotted salamander (<i>Ambystoma maculatum</i>)
State artifact	The Adena Pipe
State beverage	Tomato juice
State bicentennial bridge	Blaine Hill Bridge
State bird	Cardinal (<i>Cardinalis cardinalis</i>)
State flower	Red carnation (<i>Dianthus caryophyllus</i>)
State fossil	Trilobite (<i>Isotelus maximus</i>)
State frog	Bullfrog (<i>Rana catesbeiana</i>)
State fruit	Tomato
State gemstone	Ohio flint
State insect	Ladybug (<i>Coccinellidae</i>)
State mammal	White-tailed deer (<i>Odocoileus virginianus</i>)
State native fruit	Pawpaw (<i>Asimina triloba</i>)
State prehistoric monument	Newark Earthworks
State reptile	Black racer snake (<i>Coluber constrictor constrictor</i>)
State rock song	“Hang on Sloopy”
State song	“Beautiful Ohio”
State tree	Ohio buckeye (<i>Aesculus glabra</i>)
State wildflower	White trillium (<i>Trillium grandiflorum</i>)

Locator Map



Copyright © 1988-2003 Microsoft Corp. and/or its suppliers. All rights reserved. <http://www.microsoft.com/mapoint>
 © Copyright 2002 by Geographic Data Technology, Inc. All rights reserved. © 2002 Navigation Technologies. All rights reserved. This data includes information taken with permission from Canadian authorities © 1991-2002 Government of Canada
 (Statistics Canada and/or Geomatics Canada), all rights reserved.

An Introduction to Ohio Government

Organization

Ohio's state government contains three branches elected by Ohio voters. The legislative branch makes laws, the executive branch administers laws and the judicial branch interprets and enforces laws.

The legislative branch consists of the House of Representatives and the Senate, collectively called the General Assembly.

The executive branch includes the Governor, Lieutenant Governor, Attorney General, Auditor of State, Secretary of State, Treasurer of State, State Board of Education, the governor's cabinet, and boards and commissions whose members are appointed by the governor.

Ohio's judicial branch of government is comprised of the Supreme Court of Ohio and lower courts that all perform judicial functions for the people of Ohio.

The following are brief descriptions of the elected offices in Ohio government. These descriptions are not intended to be complete lists of responsibilities, but to give a broad overview of their duties.

Legislative Branch

Ohio's House of Representatives has 99 members; the Senate has 33 (three House Districts within each Senate District). The General Assembly debates bills proposed for adoption as laws. Most bills require a majority vote in both the Senate and the House to pass. If a bill passes one chamber and is amended by the second chamber, the first chamber must concur with the changes. If there is no concurrence, the bill goes to a conference committee of members selected from both chambers. When both chambers approve a bill, it is then presented to the governor to be signed into law, vetoed or allowed to become law after 10 days without the governor's signature. The Legislature can override a governor's veto with a three-fifths vote of both chambers. When laws are finally adopted, they become part of Ohio Revised Code, and are known as "statutes."

Executive Branch

Governor

The governor is the chief executive officer of state government. The governor is responsible for proposing the state budget, appointing state department directors and members of boards and commissions (except for the state school board, whose members are elected) and signing into law or vetoing bills passed by the Ohio General Assembly. Term limit: two consecutive four-year terms.

Cabinet Offices

- Adjutant General
- Administrative Services
- Aging

- Agriculture
- Alcohol & Drug Addiction Services
- Board of Regents
- Budget & Management
- Commerce
- Development
- Developmental Disabilities
- Environmental Protection Agency
- Health
- Insurance
- Job & Family Services
- Lottery
- Mental Health
- Natural Resources
- Public Safety
- Rehabilitation & Correction
- Taxation
- Transportation
- Workers' Compensation
- Youth Services

Lieutenant Governor

The lieutenant governor, elected to a four-year term as a running mate to the governor, is also a member of the governor's cabinet and presides in the absence of the governor. The governor may appoint the lieutenant governor to be the director of one of the departments.

Attorney General

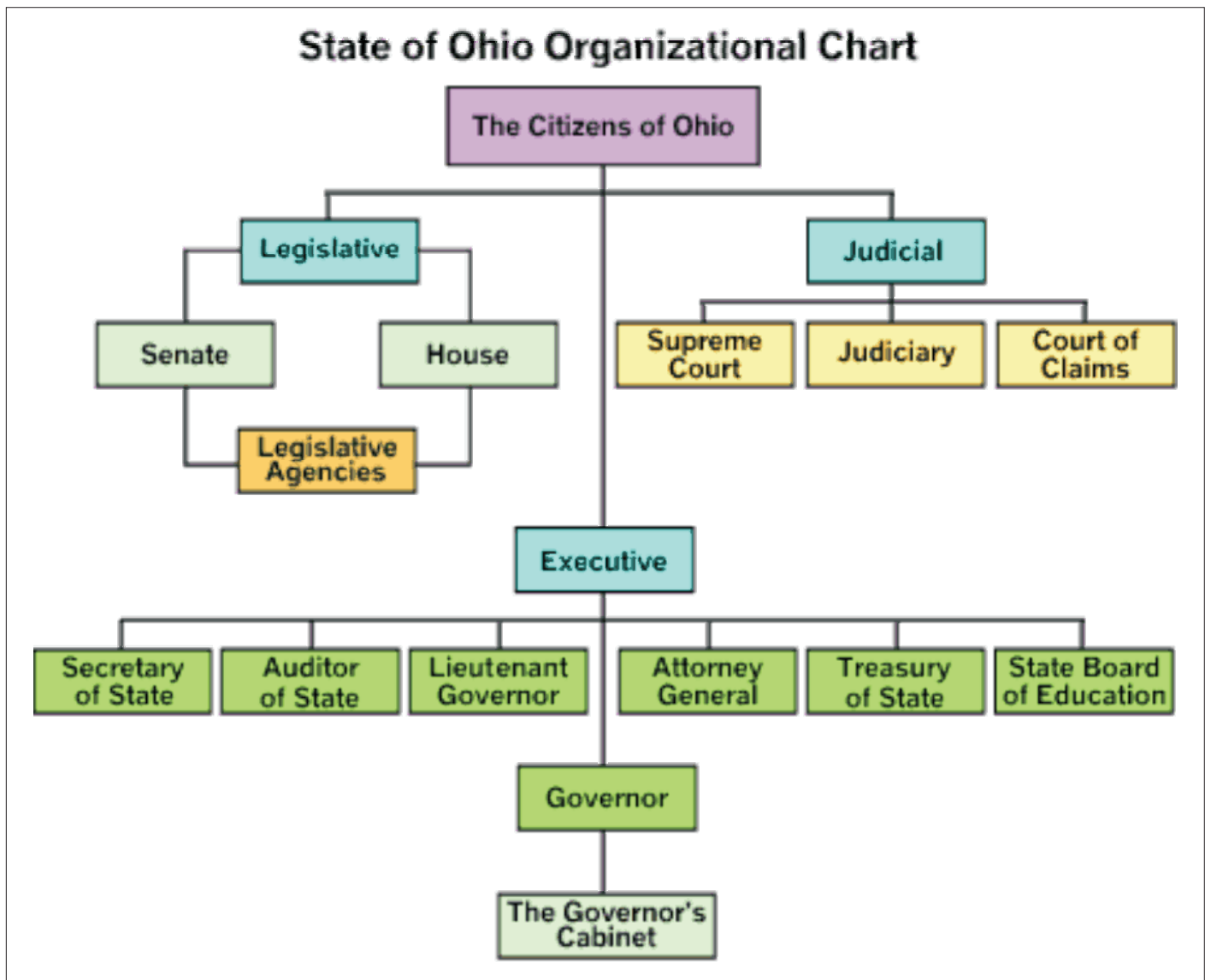
The attorney general is the lawyer for the state and all its departments. The attorney general has enforcement authority as empowered by the General Assembly. The attorney general also provides support to local law enforcement agencies. Term limit: two consecutive four-year terms.

Auditor of State

The auditor of state is the constitutional officer responsible for auditing all public offices in Ohio, including cities and villages, schools and universities, counties and townships, as well as the many departments, agencies and commissions of state government. The auditor's office also has the responsibility of making monthly distributions of state revenues to these entities. Term limit: two consecutive four-year terms.

Secretary of State

The Secretary of State is the chief election officer for the state, appointing members of the 88 county boards of elections and ensuring the integrity of the Ohio voting process. The Secretary is also charged with safely keeping the laws and resolutions passed by the Ohio General Assembly. The Secretary of state's office grants authority to companies to do business in Ohio and provides the public access to a wide variety of records and documents. Term limit: two consecutive four-year terms.



Treasurer of State

In general, the treasurer serves as the state's banker. The state treasurer manages the state's multi-billion dollar investment portfolios. Using sophisticated security measures and procedures, the treasurer maintains an accurate account of all state and custodial funds, including those of the state's five public pension systems. Term limit: two consecutive four-year terms.

State Board of Education

The Ohio State Board of Education regulates every school in

the state, whether tax-supported or not, from preschool through high school. The board also sets standards for education and certifying Ohio teachers. The board provides leadership toward the continuous improvement of Ohio schools by making legislative and budgetary recommendations to the governor and the General Assembly. There are 19 board members, 11 elected and eight appointed by the governor. Term limit: two consecutive four-year terms.

Source: Ohio Secretary of State

Akron-Canton Regional Airport

The station at the Akron-Canton Airport is located about midway between Akron and Canton, a few miles south of the crest separating the Lake Erie and Muskingum River drainage areas. Precipitation at the station and southward drains through the Muskingum River into the Ohio, while northward of the crest the Cuyahoga and other streams flow into Lake Erie. The terrain is rolling with highest elevations near 1,300 feet above sea level and many small lakes provide water for local industry as well as recreational facilities for the densely populated region. The area is mainly industrial, agricultural operations having diminished rapidly in recent years.

Lake Erie has considerable influence on the area weather, tempering cold air masses during the late fall and winter, as well as contributing to the formation of brief, but heavy snow squalls until the lake freezes over.

The arrival of spring is late in this area, allowing growing of normally frost-susceptible fruits. Summers are moderately warm, but quite humid, while the months of September, October, and sometimes November are usually pleasant although with considerable morning fog. The average last occurrence of freezing temperatures in spring is the end of April, and the first occurrence in fall is late October. In past years, growing seasons for most vegetation has varied from 120 to 211 days. Temperatures and occurrences of frost vary widely over the area because of the hilly terrain. Due to the influence of Lake Erie, snowfall is usually much heavier north of the station.

Akron-Canton Regional Airport Summit County Elevation: 1,208 ft. Latitude: 40° 55' N Longitude: 81° 26' W

	JAN	FEB	MAR	APR	MAY	JUN	JUL	AUG	SEP	OCT	NOV	DEC	YEAR
Mean Maximum Temp. (°F)	33.7	37.1	46.9	59.8	69.8	78.3	82.4	80.7	73.4	61.3	49.5	37.7	59.2
Mean Temp. (°F)	26.5	29.2	37.7	49.3	59.2	68.0	72.2	70.8	63.5	51.9	41.8	30.9	50.1
Mean Minimum Temp. (°F)	19.3	21.3	28.4	38.7	48.6	57.6	61.9	60.8	53.4	42.4	34.0	24.1	40.9
Extreme Maximum Temp. (°F)	68	72	81	88	93	100	101	97	93	86	76	76	101
Extreme Minimum Temp. (°F)	-25	-8	-3	15	27	33	43	41	33	22	8	-16	-25
Days Maximum Temp. ≥ 90°F	0	0	0	0	0	2	3	2	0	0	0	0	7
Days Maximum Temp. ≤ 32°F	14	10	4	0	0	0	0	0	0	0	1	10	39
Days Minimum Temp. ≤ 32°F	27	24	21	8	0	0	0	0	0	4	14	25	123
Days Minimum Temp. ≤ 0°F	2	1	0	0	0	0	0	0	0	0	0	1	4
Heating Degree Days (base 65°F)	1,186	1,005	841	472	214	47	5	12	110	407	690	1,050	6,039
Cooling Degree Days (base 65°F)	0	0	1	7	41	142	234	199	70	7	0	0	701
Mean Precipitation (in.)	2.60	2.26	3.03	3.58	4.32	3.76	4.12	3.67	3.38	2.83	3.19	2.84	39.58
Maximum Precipitation (in.)*	8.7	5.2	8.8	6.5	9.6	8.4	11.4	8.2	9.0	8.4	9.4	6.7	65.7
Minimum Precipitation (in.)*	0.7	0.3	1.0	0.9	1.0	0.4	0.7	0.5	0.2	0.4	0.6	0.3	23.8
Extreme Maximum Daily Precip. (in.)	2.04	1.66	1.48	1.99	2.29	2.31	3.98	3.67	3.70	2.07	2.31	1.71	3.98
Days With ≥ 0.1" Precipitation	7	6	8	8	9	8	7	6	6	6	8	8	87
Days With ≥ 0.5" Precipitation	1	1	2	2	3	3	3	2	2	2	2	1	24
Days With ≥ 1.0" Precipitation	0	0	0	1	1	1	1	1	1	0	0	0	6
Mean Snowfall (in.)	12.2	9.6	8.4	2.8	0.1	trace	0.0	trace	trace	0.5	2.9	9.9	46.4
Maximum Snowfall (in.)*	38	20	21	21	3	0	0	0	0	7	22	29	72
Maximum 24-hr. Snowfall (in.)*	9	10	8	20	3	0	0	0	0	4	7	16	20
Maximum Snow Depth (in.)	14	17	17	13	trace	trace	0	trace	trace	2	4	11	17
Days With ≥ 1.0" Snow Depth	15	12	6	1	0	0	0	0	0	0	1	10	45
Thunderstorm Days*	< 1	< 1	2	4	6	7	8	6	3	1	1	< 1	38
Foggy Days*	13	12	13	13	14	15	17	19	17	15	13	14	175
Predominant Sky Cover*	OVR	OVR	OVR	OVR	OVR	OVR	OVR	OVR	OVR	OVR	OVR	OVR	OVR
Mean Relative Humidity 7am (%)*	80	80	79	77	77	80	84	87	88	84	80	81	82
Mean Relative Humidity 4pm (%)*	69	65	59	53	52	54	54	55	56	56	64	70	59
Mean Dewpoint (°F)*	19	20	27	36	47	56	61	60	53	42	32	24	40
Prevailing Wind Direction*	SW	WSW	W	SW	SW	SW	SW	SW	S	S	S	WSW	SW
Prevailing Wind Speed (mph)*	13	12	13	12	10	9	8	8	8	9	12	13	10
Maximum Wind Gust (mph)*	76	58	64	60	56	63	68	62	52	51	58	61	76

Note: (*) Period of record is 1948-1995

Cincinnati Covington Airport

Greater Cincinnati Airport is located on a gently rolling plateau about 12 miles southwest of downtown Cincinnati and two miles south of the Ohio River at its nearest point. The river valley is rather narrow and steep-sided varying from one to three miles in width and the river bed is 500 feet below the level of the airport.

The climate is continental with a rather wide range of temperatures from winter to summer. A precipitation maximum occurs during winter and spring with a late summer and fall minimum. On the average, the maximum snowfall occurs during January, although the heaviest 24-hour amounts have been recorded during late November and February.

The heaviest precipitation, as well as the precipitation of the longest duration, is normally associated with low pressure disturbances moving in a general southwest to northeast direction through the Ohio valley and south of the Cincinnati area.

Summers are warm and rather humid. The temperature will reach 100 degrees or more in one year out of three. However, the temperature will reach 90 degrees or higher on about 19 days each year. Winters are moderately cold with frequent periods of extensive cloudiness.

The freeze free period lasts on the average 187 days from mid-April to the latter part of October.

Cincinnati Covington Airport *Boone County* Elevation: 869 ft. Latitude: 39° 03' N Longitude: 84° 40' W

	JAN	FEB	MAR	APR	MAY	JUN	JUL	AUG	SEP	OCT	NOV	DEC	YEAR
Mean Maximum Temp. (°F)	38.9	42.9	52.9	64.4	73.7	82.0	85.6	84.8	78.0	65.9	53.8	41.9	63.7
Mean Temp. (°F)	30.8	34.2	43.1	53.7	63.2	71.7	75.6	74.6	67.3	55.4	44.8	34.1	54.0
Mean Minimum Temp. (°F)	22.6	25.4	33.2	42.9	52.6	61.4	65.5	64.3	56.6	44.9	35.7	26.3	44.3
Extreme Maximum Temp. (°F)	70	75	84	87	91	102	103	101	97	91	81	75	103
Extreme Minimum Temp. (°F)	-24	-11	-11	15	30	41	47	43	31	20	10	-20	-24
Days Maximum Temp. ≥ 90°F	0	0	0	0	0	4	7	7	2	0	0	0	20
Days Maximum Temp. ≤ 32°F	9	6	1	0	0	0	0	0	0	0	0	7	23
Days Minimum Temp. ≤ 32°F	25	21	16	4	0	0	0	0	0	3	12	22	103
Days Minimum Temp. ≤ 0°F	2	1	0	0	0	0	0	0	0	0	0	1	4
Heating Degree Days (base 65°F)	1,055	866	674	350	125	15	0	2	60	312	602	951	5,012
Cooling Degree Days (base 65°F)	0	0	3	17	75	223	336	306	136	22	1	0	1,119
Mean Precipitation (in.)	3.01	2.77	3.99	3.89	4.90	3.94	3.86	3.51	2.67	3.36	3.28	3.35	42.53
Maximum Precipitation (in.)*	9.4	6.7	12.2	7.2	9.5	7.4	8.4	7.7	8.6	8.6	7.5	7.9	57.6
Minimum Precipitation (in.)*	0.6	0.3	1.1	1.0	1.1	0.9	1.2	0.3	0.2	0.3	0.4	0.5	28.0
Extreme Maximum Daily Precip. (in.)	3.23	2.84	3.25	2.41	2.96	3.04	3.11	3.52	2.55	4.30	1.87	2.47	4.30
Days With ≥ 0.1" Precipitation	6	6	8	8	9	7	7	6	5	6	7	7	82
Days With ≥ 0.5" Precipitation	2	1	2	3	3	3	3	2	2	2	2	2	27
Days With ≥ 1.0" Precipitation	1	1	1	1	1	1	1	1	1	1	1	1	12
Mean Snowfall (in.)	6.6	6.1	3.3	0.5	trace	trace	trace	trace	0.0	0.4	0.4	4.3	21.6
Maximum Snowfall (in.)*	32	20	13	4	trace	0	0	0	0	6	12	13	54
Maximum 24-hr. Snowfall (in.)*	8	9	10	3	trace	0	0	0	0	6	9	8	10
Maximum Snow Depth (in.)	14	14	11	5	trace	trace	trace	trace	0	4	1	9	14
Days With ≥ 1.0" Snow Depth	8	6	2	0	0	0	0	0	0	0	0	4	20
Thunderstorm Days*	1	1	3	4	6	7	8	6	3	1	1	< 1	41
Foggy Days*	13	12	12	9	12	13	16	19	16	14	12	14	162
Predominant Sky Cover*	OVR	OVR	OVR	OVR	OVR	OVR	OVR	OVR	OVR	OVR	OVR	OVR	OVR
Mean Relative Humidity 7am (%)*	80	79	77	76	80	82	85	88	87	83	79	80	81
Mean Relative Humidity 4pm (%)*	65	60	55	50	52	53	54	53	52	51	59	65	56
Mean Dewpoint (°F)*	22	24	31	40	51	60	64	63	56	44	34	26	43
Prevailing Wind Direction*	SSW	SSW	SSW	SSW	SSW	SSW	SW	SSW	SSW	SSW	SSW	SSW	SSW
Prevailing Wind Speed (mph)*	12	12	13	12	9	9	8	7	8	9	12	12	10
Maximum Wind Gust (mph)*	71	55	64	71	59	67	83	62	54	59	56	61	83

Note: (*) Period of record is 1948-1995